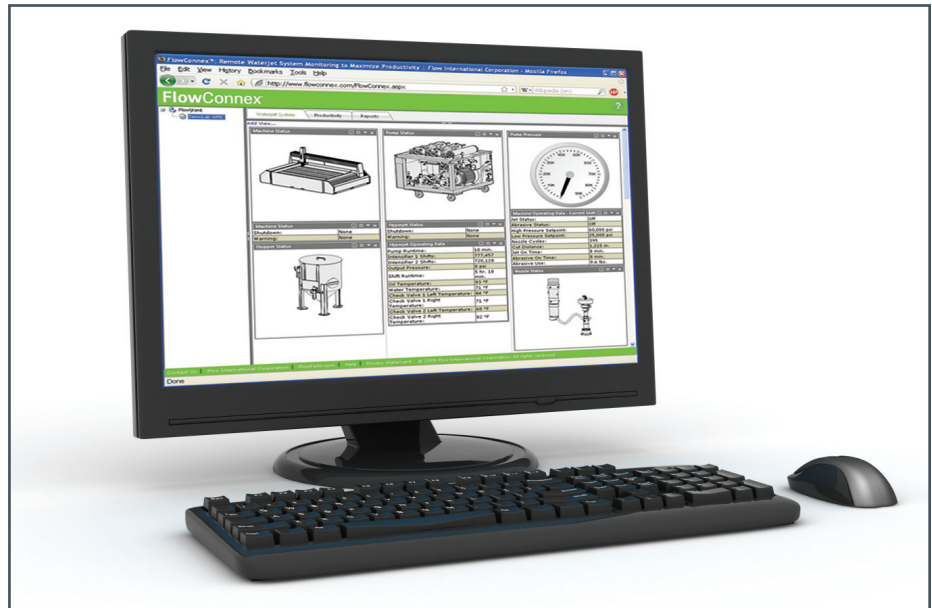


FlowConnex — Remote Waterjet System Monitoring To Maximize Productivity

BENEFITS

- Remote monitoring of Flow waterjets from any location, either on or offsite.
- Essential production data displayed on the FlowConnex dashboard gives you a quick snapshot of how the system is being used and how it's running.
- Easily review and analyze historical production data to optimize productivity.
- Appropriate personnel receive immediate alerts of system warnings and/or shutdown conditions so they can quickly respond and resolve issues.
- Because both waterjet system warning and shutdown alerts connect to Flow's expert knowledge database, you have the technical information at your fingertips to quickly resolve the situation and minimize downtime.
- Expensive in-house IT support and expertise are not required since the software and data are stored remotely at a hosted, protected and secure off-site location.



Comprehensive and Innovative Waterjet Monitoring Software

Monitoring the status of your waterjet has never been easier, or more convenient! With FlowConnex, Flow waterjets can be easily monitored from any location with an internet connection. Operators, shop supervisors and management can easily see the status of their Flow waterjet systems on the FlowConnex dashboard from the shop floor, in an office or at an offsite location. This includes waterjet machine productivity and energy utilization as well as pump pressure and other critical system parameters.

Productivity and Energy Utilization

Monitoring production data allows management to maximize productivity of their Flow waterjet. This data includes inches of material cut per shift as well as Flow waterjet machine productivity and energy utilization. Waterjet machine productivity is determined by how many hours your Flow waterjet machine has been operating per shift. Energy utilization is calculated by comparing the percentage of time your waterjet is cutting per shift with how long the pump has been turned on.

Keep the System Operating and Avoid Shutdowns

When there is a potential problem that could shut down your waterjet system, the FlowConnex dashboard visually displays a warning that delineates the problem and sends an alert via email to operators and/or management. Cell phone users can receive alerts via text messages. Whether the warning is as simple as running low on abrasive or an over temperature warning for the pump, FlowConnex pinpoints the problem and links to Flow's expert knowledge database facilitating a fast and efficient resolution. Downtime is minimized and production using your Flow waterjet system is maximized.

Specifications

- FlowConnex is a Flow software option available on an annual subscription basis.
- Available for both the WMC and the IFB Flow waterjet systems with 87k Hyperjet pumps, it can be retrofitted to existing systems with 87k.
- Remote monitoring of one Flow waterjet system at one location to multiple waterjets in many locations.
- Visual status indicators for warning and shutdown modes for Flow pumps and waterjet machines.
- Productivity data per shift including inches of material cut and Flow waterjet machine usage.
- Offsite, secure hosted server for database. Past three months of historical data stored.
- Requires high speed Internet connection.
- Requires Internet Explorer 7, Firefox 3.0, Safari 3.1 or Opera 9.5.
- Supported by Windows XP, Vista, Mac OS X and Linux.

Quickly Resolve Failures

When your Flow waterjet system is shut down, again the FlowConnex dashboard visually displays the cause of the shutdown and emails and/or sends text message alerts of the problem to appropriate personnel. The problem can be quickly addressed and resolved using Flow's expert knowledge database. With FlowConnex, Flow's extensive network of service technicians can also quickly understand why your waterjet system is not operating and help you resolve the problem either onsite or via phone support. Downtime is minimized and production is quickly resumed.

Access Anywhere by Anyone. Receive Alerts Anywhere, Including Mobile Devices.

FlowConnex and the database are easily accessed from any location through an internet connection using a secure login procedure. Multiple Flow waterjet systems, at the same location or in different locations, are easily monitored with FlowConnex. In addition, email alerts can be received and viewed from any PC or mobile device. Text messages can be sent to any cell phone anywhere.

Secure Offsite Server. IT Support or Expertise Not Required.

With FlowConnex, data is sampled periodically from both your Flow waterjet machine and the pump and stored remotely at an offsite hosted, protected and secure server. Because it is hosted offsite, expensive onsite IT support or onsite database expertise is not required. And, since the FlowConnex server stores the past 3 months of data, you can easily review and analyze production data to continually optimize productivity with your Flow waterjet!

INNOVATION | EXPERTISE | COMMITMENT

Get It All with Flow

For over three decades, Flow has set the standard for excellence in waterjet technology. We are the only waterjet company in the world that offers total solutions and support from a single source, both before and after your waterjet system is installed. We learn your business requirements. We help you select and implement the right solution. We train your staff and we are there for you for the entire lifecycle of our products.

When you partner with Flow, you get more than a product:

Our **INNOVATION** ensures that you will always have the latest and highest quality technology.

Our **EXPERTISE** ensures that you will always have the right technology for your individual business needs.

Our **COMMITMENT** to customer service ensures that you will always receive the support you need to stay productive.

For your complimentary needs analysis or a product demonstration, please call one of our waterjet experts at **1-800-446-3569**.

We look forward to partnering with you in your success.

UNITED STATES, CANADA, MEXICO, CARIBBEAN,
AUSTRALIA, & NEW ZEALAND
Flow International Corporation
23500 64th Avenue South, Kent, Washington 98032 USA
Tel: 253-850-3500 • Fax: 253-813-3285
TOLL-FREE: 800-446-3569 • info@flowcorp.com
www.flowcorp.com

CENTRAL AMERICA & SOUTH AMERICA
Tel: +55-11-3616-2822
flowlatino@flowlatino.com • www.flowlatino.com

EUROPE, MIDDLE EAST, & AFRICA
Tel: +49-7252-538-0
info@floweurope.com • www.floweurope.com

TAIWAN, CHINA, KOREA, & SOUTHEAST ASIA
Tel: +886-3-577-2102
inquiry@flowasia.com.tw • www.flowasia.com

JAPAN
Tel: +81-52-701-7021
fjc@flowjapan.co.jp • www.flowasia.com

