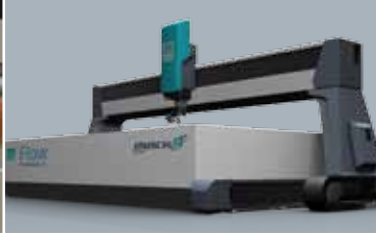




WATERJET OVERVIEW



FLOW THE COMPANY

It takes constant innovation, hard work, and focus on customer commitment to earn the title of *The World Leader in Waterjet Technology*. It's a responsibility we don't take lightly, and it fuels our passion to create your next groundbreaking waterjet solution.

FLOW HEADQUARTERS
Kent, Washington



COMPLETE SYSTEM MANUFACTURER

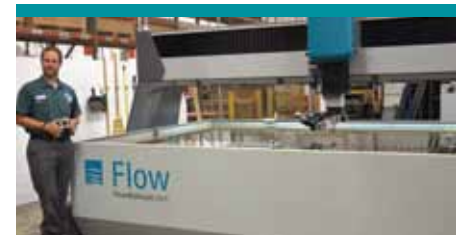
Your entire waterjet system comes from one single supplier—Flow. Every part is specifically designed to work together using only the finest material and components in our manufacturing process.



CUSTOMER FOCUS

We are dedicated to serving you.

As the leading supplier to Fortune 500 companies worldwide, more than half of our customers have fewer than 25 employees. Though the specific needs and applications may be different, we are committed to providing every one of our customers the highest quality service and support.



JOHN FORCE, JOHN FORCE RACING
17-TIME NHRA WORLD CHAMPIONS

“The ability to waterjet cut exotic high temperature metals with precision, and even cut gasket materials, is a huge advantage for John Force Racing.”

ABOUT WATERJET TECHNOLOGY



Pure Water

Abrasive

HOW IT WORKS

Flow machines are designed to operate as both pure and abrasive waterjets.

A pure waterjet is used to cut soft materials.

When garnet abrasive is entrained into the waterjet stream, the abrasivejet can cut hard materials.

Water and Abrasive

SIMPLE YET POWERFUL SOFTWARE

With our comprehensive software suites, you will be on your way to cutting fast, accurate parts in **three easy steps**.



1

DRAW, IMPORT, OR SCAN YOUR PART

Drawing in FlowMaster® and FlowXpert™ is easy. You can quickly import multiple file formats (even pictures) for processing.



2

INPUT MATERIAL SPECIFICATIONS

Next, input the material type, thickness and edge quality.

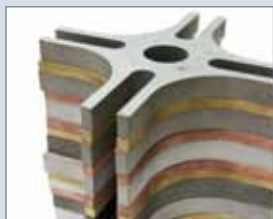


3

PRESS "START" TO CUT

Then press "Start" to begin cutting. The software does the rest.

ATTRIBUTES OF FLOW WATERJET CUTTING



VERSATILITY

Cut virtually any material, thick or thin.



BEST EDGE

No heat, no stress. Just a satin smooth edge.



EASY TO USE

Software parameters are virtually the same for every job.



PRECISION CUTTING

High accuracies, for a finished part directly off the table.



INCREDIBLE DETAIL

Thin stream and gentle erosion process produces fine detail.



MATERIAL SAVINGS

Tight nesting and common line cutting.

TECHNOLOGY LEADERSHIP: DRIVING WATERJET INNOVATION

Do you have a goal of **better, faster, more profitable production parts**? Each of the advanced technology platforms that make up our waterjets has been purposefully designed to deliver all of that...and more.



In 1979, Dr. Mohamed Hashish led the team that invented the abrasive waterjet...Today he continues to develop breakthrough waterjet solutions with an equally passionate team of experts at Flow.

THE REAL DEAL

Accept no substitutions when it comes to your technology.

With the most waterjet patents in the industry, you can be certain the technology you receive from Flow is highly advanced, carefully tested and refined. It's unique to Flow and unlike any other technology in the industry.

We combine our waterjet expertise with the all-important feedback of our customers, enabling us to design waterjets best suited for your needs.



THE RIGHT WATERJET FOR YOUR NEEDS

Our waterjet experts are rigorously trained to match the right waterjet system to your application.

WIDE RANGE OF PRODUCTS

THE MACH SERIES

Leading waterjet performance for every application and budget.



MACH 2

THE ESSENTIAL WATERJET

Flow performance made affordable. The Mach 2 series not only outperforms the standard waterjet offerings in the industry, but wins in value as well.

Mach 2 System Dimensions

Sizes Range From: 1.3 m x 1.3 m to 4 m x 2 m
[4.3 ft x 4.3 ft to 13.1 ft x 6.5 ft]



MACH 3

THE WORLD'S MOST POPULAR WATERJET

With thousands of system installations worldwide, the Mach 3 series has earned the title of *The World's Most Popular Waterjet*.

Mach 3 System Dimensions

Sizes Range From: 1.3 m x 1.3 m to 7.3 m x 2 m
[4 ft x 4 ft to 24 ft x 6.5 ft]



MACH 4

YEARS AHEAD

Faster cutting. Faster Rewards. Unrivaled operator convenience designed for maximum efficiency. Advanced technology that's years ahead.

Mach 4 System Dimensions

Sizes Range From: 2 m x 2 m to 4 m x 14 m
[6.5 ft x 6.5 ft to 13.1 ft x 46 ft]

GIANCARLO BINAGHI,
PRESIDENT, SILFER
METAL JOB SHOP
ALBAVILLA, ITALY

“At Silfer, versatility is our business. We specialize in short run, quick turnaround work. The Flow waterjet has allowed us to increase our throughput and reduce our turn around time.”

QUICK PRODUCT REFERENCE MATRIX



MACH SERIES WATERJETTS

OPTIONS & ACCESSORIES

We offer many different configurations and options on our waterjet systems. Your Application Specialist will help you understand what system best meets your specific application and needs.

	Mach 2	Mach 3	Mach 4
ULTRAHIGH-PRESSURE PUMPS			
4,150 bar-rated [60,000 psi] HyPlex® Prime	•	•	•
4,150 bar-rated [60,000 psi] ESL Intensifier	•	•	•
6,500 bar-rated [94,000 psi] HyperJet®		•	•
CUTTING HEADS			
Pure Waterjet	•	•	•
Standard Abrasive Waterjet	•	•	•
Dynamic Waterjet®		•	•
Dynamic Waterjet XD		•	•
Programmable Z-axis	•	•	•
ANCILLARY			
Roll-Around Control	•	•	•
UltraPierce™ Vacuum Assist	•	•	•
Dynamic Contour Follower™		•	•
Closed Loop Water Filtration	•	•	•
Closed Loop Chiller	•	•	•
HydroClean™ Abrasive Removal		•	•
Spray Shields		•	•
Safety Light Curtains	•	•	•
ProXtract™ Part Extractor	•	•	•
Pneumatic Drillhead		•	•
Laser Edge Finder	•	•	•
Operator Convenience Package		•	•
FlowTeach™ Wireless Path-Teaching Pendant	•	•	
Remote Pendant			•
SOFTWARE			
FlowMaster® CAD/CAM Package	•	•	•
FlowXpert™ 3D CAD/CAM Package		•	•
FlowCode™ G-Code Converter	•	•	•
FlowNest™	•	•	•
CATIA Compatibility Package		•	•
Raster to Vector Conversion Software	•	•	•

© 2011 Flow International Corporation. All Rights Reserved. Specification and depictions are correct at time of printing. Flow reserves the right to make specification and design changes. Version 111.



FLOW WORLDWIDE HEADQUARTERS

23500 64th Avenue South
Kent, Washington 98032 USA

Tel: 253-850-3500 • TOLL-FREE: 800-446-3569
info@flowcorp.com • FlowWaterjet.com



Flow is a global company with nearly 200 offices worldwide. Visit our website at FlowWaterjet.com to contact us.